

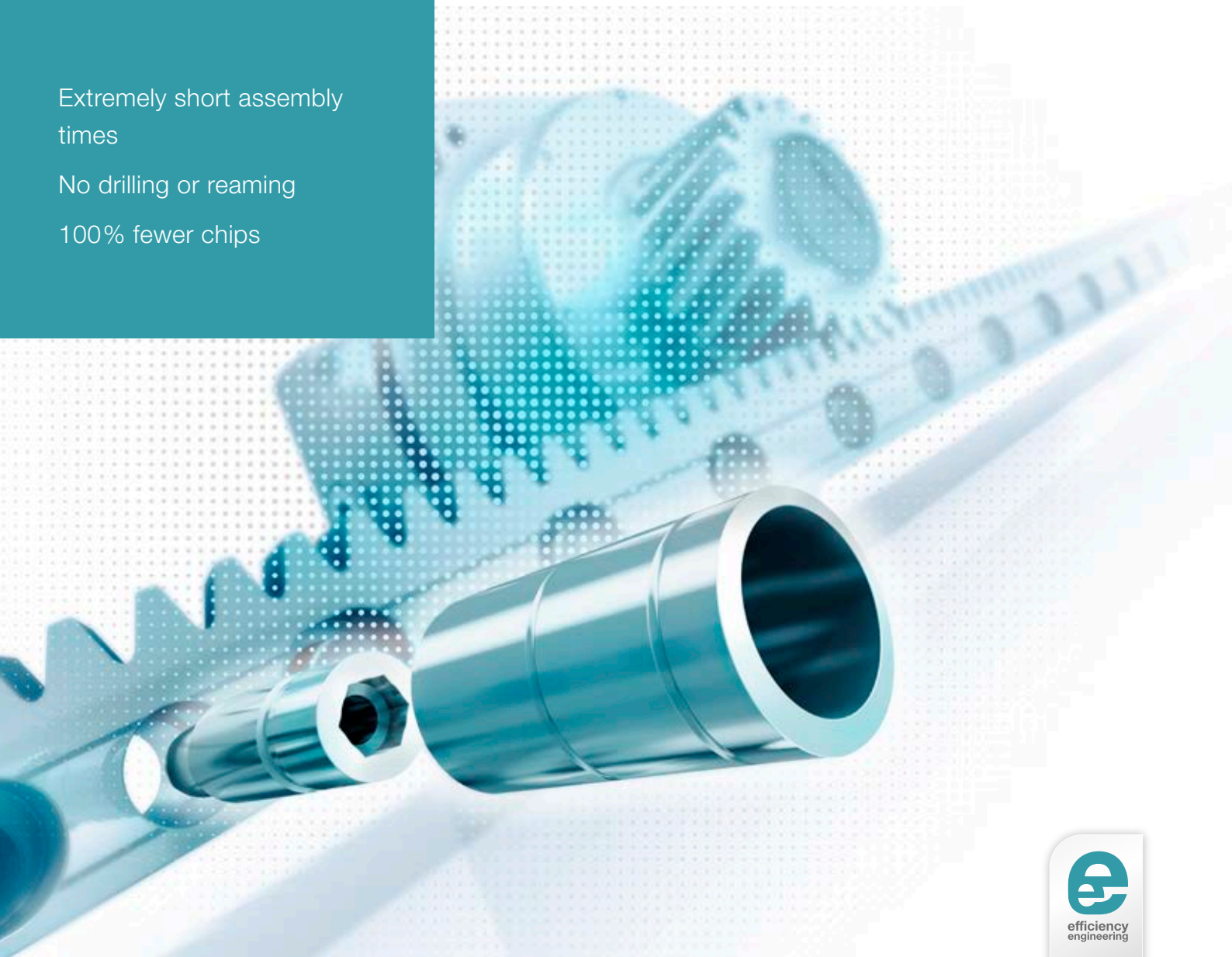
## INIRA pinning

The revolution in rack assembly

Extremely short assembly times

No drilling or reaming

100% fewer chips



# Many ideas have made history. Our ideas map out the future

INIRA combines our existing innovative concepts for the simple, safe and efficient assembly of racks. INIRA clamping and INIRA adjusting have already made the assembly of racks much faster, more accurate and more ergonomic. INIRA pinning is setting new benchmarks in pinning and is further revolutionizing rack assembly.

INIRA clamping.  
Simply faster and more ergonomic



Previously, enormous effort was required to clamp racks to the mounting base using screw clamps. INIRA clamping integrates the clamping device in the rack. The rack incorporates a mounting sleeve which is guided over the head of the fastening screw to ensure quick and ergonomic clamping.

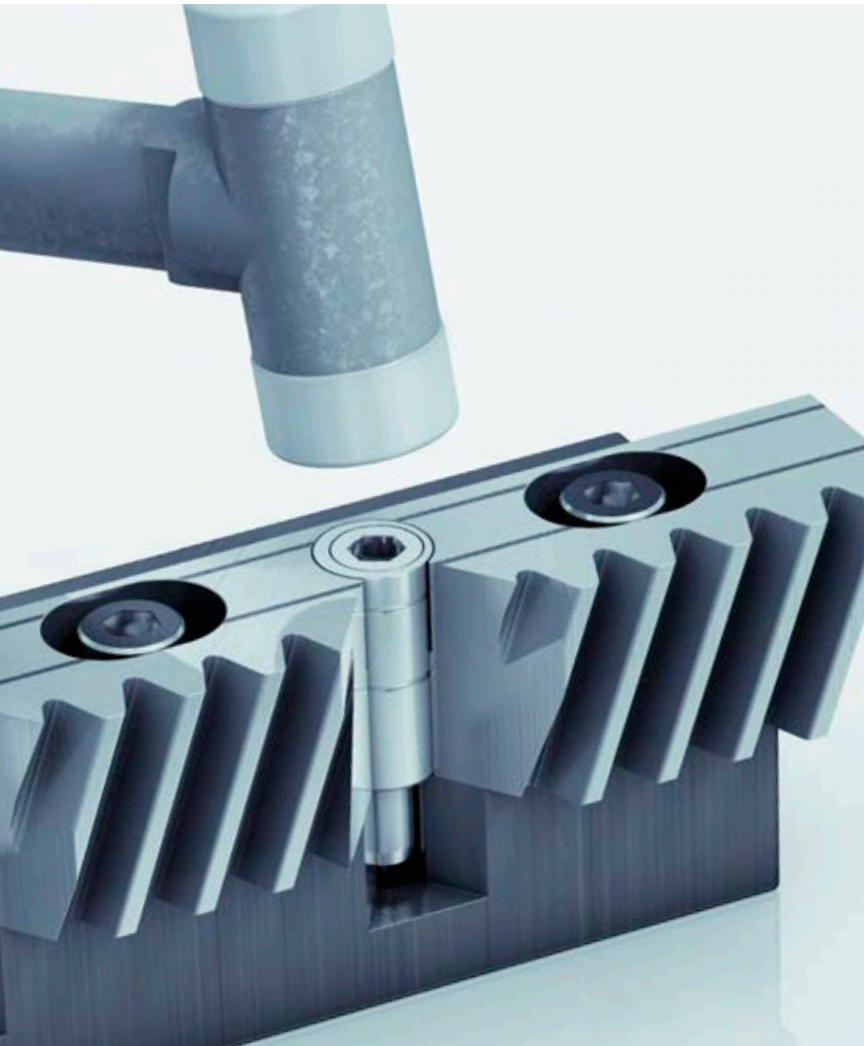
INIRA adjusting.  
Simply safer and more precise

In combination with INIRA clamping, INIRA adjusting is the ideal solution for perfectly adjusting the transition between two rack segments. The innovative adjusting tool can set the transition extremely reliably and precisely, accurate to the micrometer.



INIRA pinning.  
Simply better and more efficient

The previous method used for pinning racks was immensely time-consuming. Precision bores had to be drilled and the chips generated had to be removed carefully from the component. Many of our customers therefore were demanding a faster, simpler method. INIRA pinning now offers a completely new solution for the chipless pinning of racks, which reduces assembly times considerably.



## INIRA pinning. Benefit from the unique advantages of our innovation

Remarkably quick assembly –  
97.78% time savings

Simple pinning of the rack in one minute instead  
of 45 minutes in previous cases.

No drilling and reaming,  
100% fewer chips

Outstandingly safe because no chips are  
generated during the pinning process. No need for  
time-consuming cleaning work after assembly.

Exceptionally easy assembly

Assembly work significantly reduced. Easy to  
handle in any mounting position.

### Use the technology of tomorrow today. **Installation steps**



The assembly pin is inserted in the  
fully assembled rack.



The assembly pin is driven into the  
pre-manufactured pin bore in the  
mounting base.



The assembly bushing and the  
mounting pin are turned in opposite  
directions until the bushing engages  
in the pin bore and then pushed in  
by hand up to the second marking.



The assembly bushing is then  
driven in flush using a hammer.



alpha

WITTENSTEIN alpha GmbH · Walter-Wittenstein-Straße 1 · 97999 Igersheim · Tel. +49 7931 493-10800 · info@wittenstein-alpha.com

**WITTENSTEIN alpha – intelligent drive systems**

[www.wittenstein-alpha.com/INIRA](http://www.wittenstein-alpha.com/INIRA)



“Amazing how an established, decades-old method can be completely redefined. The work involved is much less than before.”



More on INIRA pinning and other innovative concepts for the efficient assembly of racks.

